

金属片式探针

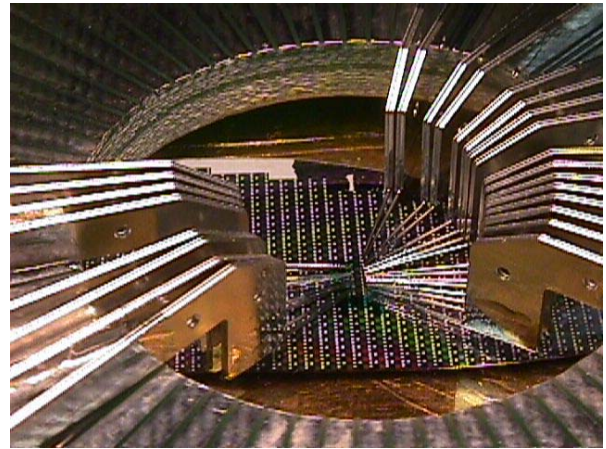
金属片式探针

Accuprobe

提供各种片式探针供半导体,混合集成电路和激光调整等应用检测环境.金属片式探针适配于大量不同的探针电路卡,可提供可靠的,可重复检修的电子器件检测. Accuprobe

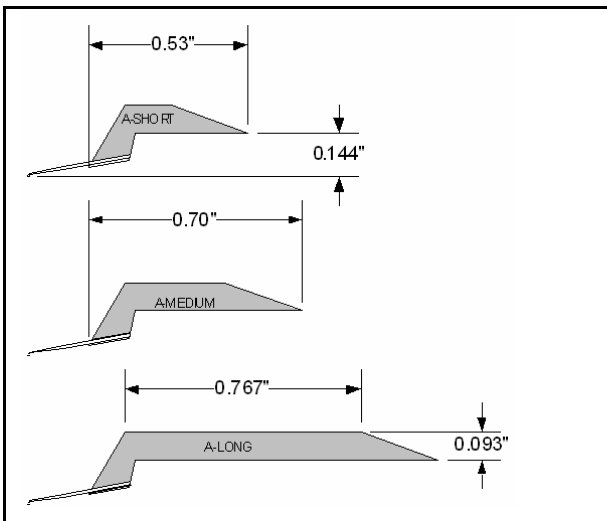
提供多种标准工作深度金属片式探针供半导和混合集成电路检测.Accuprobe标准金属片针适用于各式直径的针尖直径(0.006-

0.015“).客户可顶够厂家预设的标准件也可根据自己所需订够不同延伸长度,不同针尖尺寸,不同弯角的特殊探针.



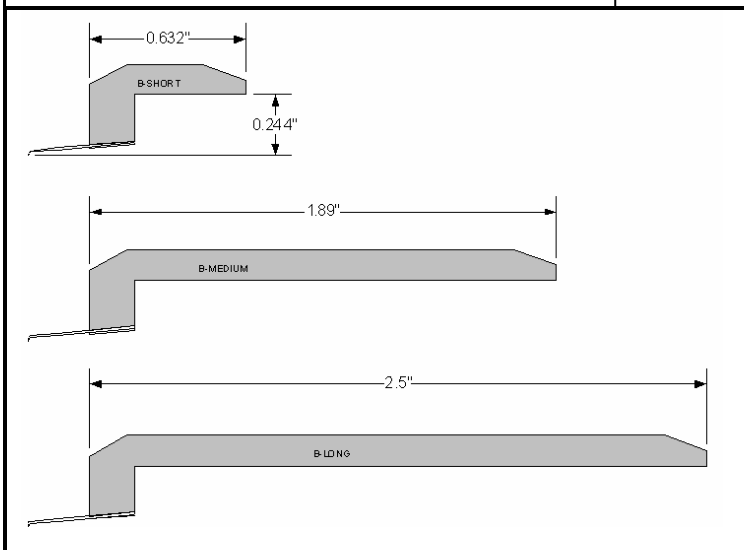
Metal Blade Probe Card

Blade Geometry



Attributes

BA系列金属片式探针具有144mil工作深度,主要用于精密半导体基片检测.BA系列多采用细小探针和针尖以适用于50微米落角尺寸.Accuprobe提供短型,中型和长型臂长的探针以适配于各式电路卡.



BB系列金属片式探针具有244mil工作深度,主要用于激光调整电路检测.中型和长型臂长的探针易于弯曲可用于检测通常情况下难以接近的落角.Accuprobe同时提供一款加后型探针可用于难度较大的基片接触检测.

Blade Geometry

Attributes

| | |
|--|--|
| <p>0.63" C-SHORT 0.317" 1.55" C-MEDIUM 2.5" C-LONG</p> | <p>BC系列金属片式探针具有317 mil工作深度,主要用于激光调整电路检测.短型,中型和长型臂长的探针适用于各式电路卡和基片尺寸.</p> |
| <p>0.37" 2.26" D-BLADE 0.317" 2.5" E-BLADE 0.472"</p> | <p>B D L 和 B E L 系列金属片式探针也是用于激光调整电路检测,分别具有317 mil 和缓472mil工作深度. BDL系列具有一段鼻壮延伸结构,便于接触较远的落角.</p> |
| <p>2.5" F-BLADE 1.08" J-BLADE</p> | <p>BFL和BJL系列是特制的金属片式探针,具有1080mil工作深度.BFL和BJL系列具有相似的几何结构. BFL系列具有10度针尖斜角,BJL系列具有5度针尖斜角.</p> |

金属片式探针

金属片式探针选择和订购

客户可根据以下表格选择订购金属片式探针,例如,

厂家型号:BAMW3AF

BA---小型片式144mil工作深度

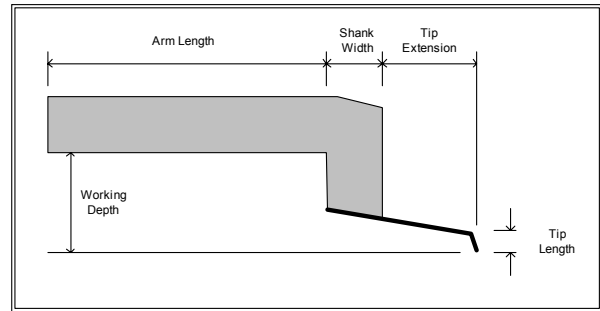
M---中型552mil臂长

W---金属钨10mil针体

3---针尖直径1.5mil

A---针尖斜坡长度8mil

F---针尖型壮,平型



Blade Geometry

| Profile | Size | Working Depth | Blade Thickness | Arm Length | Shank Width | Tip Extension | Tip Length |
|---------|------|---------------|-----------------|------------|-------------|---------------|------------|
| BA | S | 144 | 15 | 378 | 152 | 200 | 8 |
| BA | M | 144 | 15 | 552 | 152 | 200 | 8 |
| BA | L | 144 | 15 | 1000 | 152 | 200 | 8 |
| BB | S | 244 | 20 | 452 | 180 | 250 | 15 |
| BB | M | 244 | 20 | 1710 | 180 | 250 | 15 |
| BB | L | 244 | 20 | 2320 | 180 | 250 | 15 |
| BC | S | 317 | 20 | 452 | 180 | 250 | 8 |
| BC | M | 317 | 20 | 1370 | 180 | 250 | 8 |
| BC | L | 317 | 20 | 2320 | 180 | 250 | 8 |
| BD | L | 317 | 32 | 2125 | 500 | 250 | 8 |
| BE | L | 472 | 32 | 2335 | 165 | 250 | 60 |
| BF | L | 1080 | 32 | 2310 | 190 | 250 | 60 |
| BG | S | 244 | 20 | 452 | 180 | 250 | 8 |
| BG | M | 244 | 20 | 1710 | 180 | 250 | 8 |
| BG | L | 244 | 20 | 2320 | 180 | 250 | 8 |
| BH | S | 144 | 15 | 347 | 143 | 230 | 15 |

*all sizes in mils

Blade Selection Table

| Type | Profile | Body Length | | | Needle Material | Needle Diameter | Tip Diameter "A" | Tip Drop "B" | | Tip Shape |
|-------------------|--------------------|-------------|---|---|-----------------|-----------------|------------------|--------------|------------------|---------------------|
| B Metal blade | A | S | M | L | A | Tungsten | .006" (.152mm) | 1* | .0005" (.0127mm) | F Flat |
| | B | S | M | L | W | Tungsten | .010" (.254mm) | 2 | .001" (.0254mm) | R Radius |
| | C | S | M | L | WR | Tungsten Rh | .010" (.254mm) | 3 | .0015" (.0381mm) | C .030" (.762mm) |
| | D | | | L | D | BeCu | .010" (.254mm) | 4 | .002" (.0508mm) | D .060" (1.524mm) |
| | E | | | L | HD | Hard BeCu | .010" (.254mm) | 5 | .0025" (.0635mm) | |
| | F | | | L | P | Palladium | .010" (.254mm) | 6 | .0035" (.0889mm) | |
| | G | S | M | L | E | Tungsten | .012" (.3048mm) | 7 | .005" (.127mm) | |
| | H | S | | | ER | Tungsten Rh | .012" (.3048mm) | 8 | .010" (.254mm) | |
| C Ceramic blade | Ceramic types only | | | | C | BeCu | .012" (.3048mm) | 9 | .012" (.3048mm) | |
| | 1 | S | M | | HC | Hard BeCu | .012" (.3048mm) | 10 | .015" (.381mm) | |
| | 2 | S | M | | T | Tungsten | .015" (.381mm) | | | |
| | 3 | | M | | TR | Tungsten Rh | .015" (.381mm) | | | |
| | 4 | S | M | | B | BeCu | .015" (.381mm) | | | |
| | 5 | S | M | | HB | Hard BeCu | .015" (.381mm) | | | |
| | Z1 | S | M | | | | | | | |
| | Z2 | S | M | | | | | | | |

Notes:
 1 BeCu not available in .0005" tip.
 2 Not all combinations of tip material, Tip Drop "B", and tip diameter "A", are possible.

Accuprobe, Inc.
 35 Congress Street.
 Salem, MA 01970 USA
 +1-978-745-7878
 +1-978-745-7922 Fax
 info@accuprobe.com

www.accuprobe.com



©2002-08 Accuprobe, Inc. Specifications may change without notice. Accuprobe and the Accuprobe logo are trademarks of Accuprobe, Inc.